



MANAGED SERVICES

Network Assessment

Is your network stable? Scalable? Secure?

Network Partners offers 3rd party assessments of your technical infrastructure. For some, a 3rd party assessment is a requirement; for others, a good management practice. In all cases, it's beneficial to understand the health and stability of your network.

Benefits

- Addressing network capacity, performance, fault tolerance and availability issues.
- Monitoring network activities and services as part of security measurement.
- Assisting better planning for future network development.
- Providing early warning to help avoid network crises.
- Defining systems, traffic and configurations.

Find answers

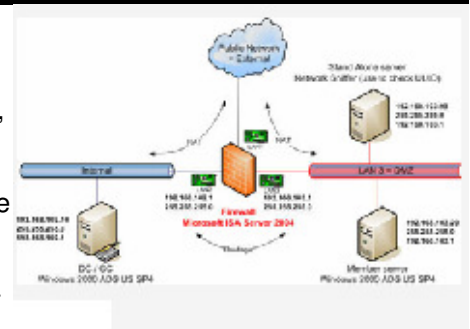
- How well is my network performing?
- Does my network strategy fit the needs of my business? Today and in the future?
- Do I have max performance?
- Are costs as low as possible?

Deliverables

- Thorough report by network technician
- Complete view of network stability

NETWORK PARTNERS, INC.
 1-800-700-0697
 info@networkpartners.com
 www.networkpartners.com
 Houston · Dallas · St. Louis · Denver

The network environment encompasses a wide range of electronic networked activities, including information services, products, hardware and software, and telecommunications resources that users and providers receive from the network. As a long-term investment, the network must be scalable as needed; hence, it must be based on robust, scalable technologies. The performance of your network environment answers one key question: "How well is your network doing what it claims to be doing?"



Our analysis includes a review of your network and equipment, scalability, performance, connectivity, software licensing, software patch management, portable computing devices, and many other areas. Our deliverables include a report of our findings as well as recommendations, and a prioritized action plan. The entire assessment takes from one week to as long as three months, depending upon the scope.

The Network Performance Assessment

This is the basic service package and is a high-level review of the organization's network infrastructure from a performance perspective. This review is focused on current performance and scalability. We analyze your network with respect to its current performance and extrapolate several growth scenarios and evaluate potential performance. This establishes a performance envelope with the deliverable expressed in terms of today's performance by user count and growth potential of major components also in user counts. For example, say you have 32 users and a 1.544 MB internet connection and that connection is performing at an average rate of 512kb during peak time. We seldom push any technology beyond about 2/3 capacity so we would conclude that 64 users is the maximum you could scale your internet connection to assuming your function set did not change. This will be derived for multiple components within your environment including, but not limited to:

- Network Topology/LAN
- Servers
- Switches
- Routers
- WAN connections/Internet connections
- Applications
- Staff/Management

To collect the current performance statistics we load NPI's proprietary NetGuard® network management platform on a single device and using that software give you a complete view of your internal network, including:

- Missing patches for all Microsoft operating systems and applications
- Vulnerabilities for all network devices (including routers, switches, servers, firewalls, wireless access points, IDS, IPS, and desktops).
- Performance metrics for all servers and network devices

To assess scalability, we use a number of different tools, including:

- Traffic generators
- Sniffers/protocol analyzers
- Judgment and experience in the field

This information is then combined into a single document and presented to you by a qualified network technician, with recommendations.

This study usually requires 30 days and is priced per device.