



MANAGED SERVICES

# QuickStart™

## Managed Services Overview

QuickStart™ was designed exclusively to expedite the installation of your WatchGuard, SonicWall, Juniper, CheckPoint and Cisco firewalls. Network Partners professional engineers will guide you through the installation from unpacking the firewall to installing it on your Internet connection. We will then configure the device for maximum safety and performance. We'll account for Web Servers, mail servers and any other device in your environment that requires Internet exposure. As an added bonus, we will monitor your environment 24 hours a day, for 90 days.

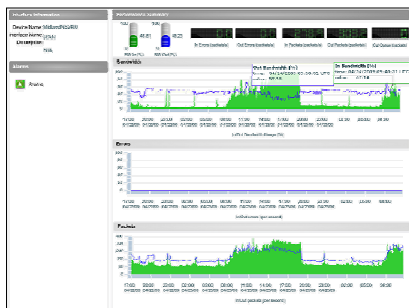
Preserving the foundation of a company's critical information does not subside once a security device has been implemented. Businesses must continually monitor their applications, servers, databases and alternate networking devices for any signs of malevolent and vicious activities. To insure the company is holistically managed and secure 24x7, means 24x7 monitoring needs to be implemented. Expertise, dedication, and analysis of situations need to be in order to assure that attacks to the device or network are immediately brought to your attention. Providing 24x7 monitoring and solution expertise, NPI secures the company's critical information through monitoring and management, all in a realistic, all-inclusive monitoring layout. NPI provides valuable information and reports via the OnGuard™ web portal for our customers to view and analyze as well.

### OnGuard™

OnGuard™ is a portal used to view the inputs of several monitoring engines. OnGuard™ provides a quick overview of the health of the various monitored aspects of your network in an overview format which can be drilled into for more detail. The report that is produced shows various security details, such as the number of times a probable port scan has been detected on a client's network and the steps NPI's Network Operations Center (NOC) took to resolve the issue.

### Network Monitoring Solution

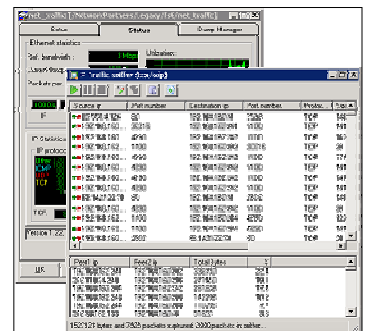
NMS is a probe-based, highly scalable monitoring engine. It can quickly be deployed to watch one firewall or an entire data infrastructure. NMS watches network devices and servers through a variety of WMI, SNMP, and network probes to ensure that end users are not the first to notice IT outages and gives management a chance to keep ahead of their IT infrastructure. The image you see above is a live Dashboard, or a real-time



view of your environment's performance. This is provided through NMS and is another benefit to the QuickStart™ managed service. With just one click, you can get a high-level overview of the health and security of your network. Peace of mind at your fingertips!

### Packet Capture

One of the other benefits of NMS is its ability to capture packets. What you see in the graphic to the right, is an example of that. This is an example of a network probe in action. When a spike in network traffic is detected NMS can be used to determine which conversations are taking up the majority of network bandwidth.



### Customizable Reports and Branded Reporting Systems

All of this data is available and fully customizable to reflect your company's logo and information, resulting in a completely unique reporting system. This service gives you complete access to your network's condition and is extremely valuable and convenient!

NETWORK PARTNERS, INC.  
1-800-700-0697  
info@networkpartners.com  
www.networkpartners.com

Houston · Dallas · St. Louis · Denver

QuickStart™ includes 90 days of monitoring and reporting service at no additional charge. For a low fee, get your new or existing firewall professionally configured and installed, along with the assurance that someone is keeping an eye on the safety of your network 24 hours a day, 7 days a week. NPI's Quickstart™ service truly is here for YOU!